



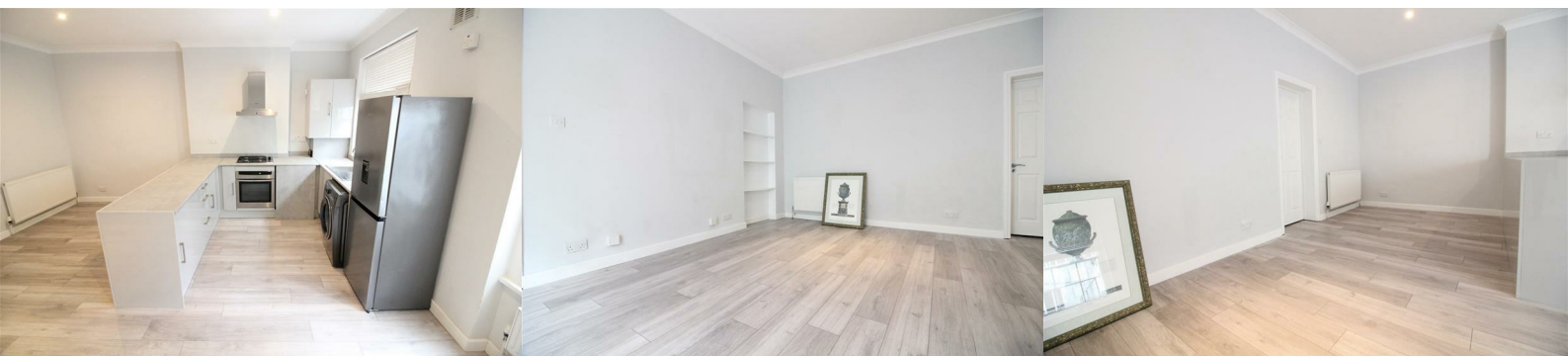
## Eccleston Square

London, SW1V 1PP

**£2,166 Per month**



Stunning, recently modernised, one double bedroom apartment to rent, just a stones throw from Victoria station, easy access throughout the city. Providing a generously sized open plan fitted kitchen, spacious lounge diner, plus a larger than average bedroom with an ensuite bathroom. Available to view now.



Stunning, recently modernised, one double bedroom apartment to rent, just a stones throw from Victoria station, easy access throughout the city. Providing a generously sized open plan fitted kitchen, spacious lounge diner, plus a larger than average bedroom with an ensuite bathroom. Available to view now.

Area Map



Floor Plans



We are very pleased to bring to offer for rent, this spacious and recently modernised, one double bedroom lower ground apartment.

Situated within a very well maintained and tidy, large portico fronted period property, just a short walk from Victoria station and all of its nearby amenities.

This would be a fantastic new long term home for a single occupant or couple who require fast access to all parts of the city.

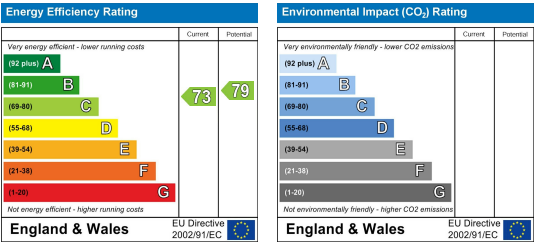
- Features include;
- A very spacious and well presented, open plan, modern fitted kitchen, providing an integrated gas cooker, electric oven, washing machine, fridge/freezer and dishwasher, with lots of storage space
  - The open plan lounge and dining area are very spacious and can easily accommodate a sofa unit, coffee table and dining table
  - The bedroom is very well proportioned for this area and has a significant amount of space enough to fit a king size bed plus wardrobe units
  - Attached to the bedroom is a bathroom suite, with a walk in shower, WC and sink
  - The property benefits from wooden flooring throughout and a modern neutral decor
  - There is the bonus of a gas central heating system
  - Well located for the Victoria station, serviced by the circle, district and Victoria lines, providing fast movement across the city
  - A great new long term home for a single occupant or couple
  - Pet friendly
  - Ready to view now
  - Street permit parking available

Call our office today to organise an appointment to view.

- Recently modernised throughout
- Close to Victoria station
- Excellent condition
- Gas central heating
- Ultra modern open plan kitchen
- Integrated appliances
- Long term let
- Large bedroom
- Lower ground
- Available now

Please contact Vine Estates on 020 3744 1177 if you wish to arrange a viewing appointment for this property or require further information.

Energy Efficiency Graph



These particulars, whilst believed to be accurate are set out as a general outline only for guidance and do not constitute any part of an offer or contract. Intending purchasers should not rely on them as statements of representation of fact, but must satisfy themselves by inspection or otherwise as to their accuracy. No person in this firms employment has the authority to make or give any representation or warranty in respect of the property.